

SAFETY AND SCHOOL ENVIRONMENT

Non-CSAP Course Offerings

Your School Offers	does	does not
• art.....	<input type="checkbox"/>	<input checked="" type="checkbox"/>
• drama or theater.....	<input type="checkbox"/>	<input checked="" type="checkbox"/>
• music.....	<input checked="" type="checkbox"/>	<input type="checkbox"/>
• physical education.....	<input checked="" type="checkbox"/>	<input type="checkbox"/>
• opportunity for civic or community engagement.....	<input type="checkbox"/>	<input checked="" type="checkbox"/>
• internet safety program.....	<input checked="" type="checkbox"/>	<input type="checkbox"/>
• International Baccalaureate.....	<input type="checkbox"/>	<input checked="" type="checkbox"/>
• extracurricular activities.....	<input checked="" type="checkbox"/>	<input type="checkbox"/>
• athletics.....	<input type="checkbox"/>	<input checked="" type="checkbox"/>
• preschool program.....	<input checked="" type="checkbox"/>	<input type="checkbox"/>
• full-day kindergarten program.....	<input checked="" type="checkbox"/>	<input type="checkbox"/>
• before-and-after-school care program.....	<input type="checkbox"/>	<input checked="" type="checkbox"/>

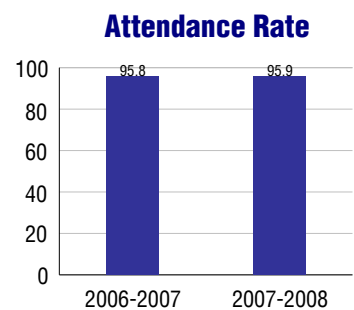
Safety and Discipline

Safe schools are a top priority for parents, teachers, and communities. Your school safety and discipline record for the 2007-2008 school year is:

Type of Incident	Number of Incidents Reported	Percent of Total Incidents
Substance Abuse - Drugs		
Substance Abuse - Alcohol		
Substance Abuse - Tobacco		
Felony Assaults		
Fights		
Possession of Dangerous Weapons		
Other Violations Code of Conduct	5	100.0%

Student Attendance and School Calendar

2007-2008	Your School
Enrollment	211
Average Daily Attendance	202
Student Dropouts	N/A



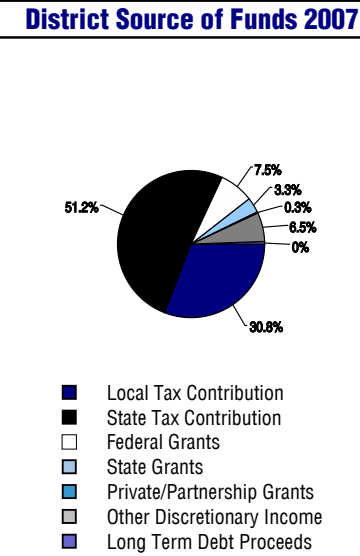
Student Information Over Time

	2005-2006	2006-2007	2007-2008
Student Enrollment Stability	88.2%	91.9%	93.4%
Students Eligible for Free and Reduced Lunch	87.8 %	78.8 %	78.7 %

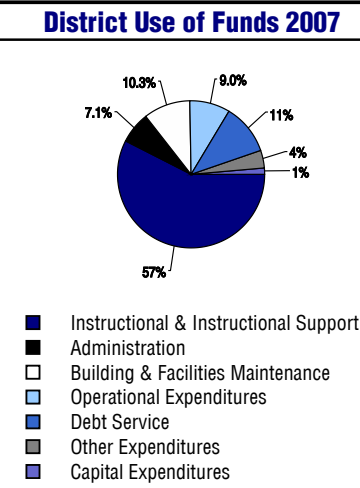
For more information and further details about this report, visit www.state.co.us/schools
 Colorado Department of Education, 201 East Colfax Ave. Denver, CO 80203
Avondale Elementary School
 2700/0472/E
 213 Highway 50 East . Avondale, CO 81022 . 719-947-3484
 10/20/2008

DISTRICT TAXPAYER'S REPORT

Sources of School District Revenue	2007
Local Tax Contribution	\$21,512,637
State Tax Contribution	35,758,380
Federal Grants	5,218,453
State Grants	2,285,284
Private/Partnership Grants	231,185
Other Discretionary Income	4,503,074
Total District Operating Revenue	\$69,509,013
Long Term Debt Proceeds	304,756
Total District Revenue	\$69,813,769
Total District Operating Revenue Per Pupil =	\$8,322
Total District Revenue Per Pupil (Including Long Term Debt) =	\$8,358
District Per Pupil Operating Revenue =	\$5,630
State Average Per Pupil Operating Revenue =	\$6,080



District Use of Funds	2007
Instructional & Instructional Support	\$39,695,427
Administration	4,881,141
Building & Facilities Maintenance	7,129,244
Operational Expenditures	6,195,082
Debt Service	7,521,951
Other Expenditures	2,709,649
Total District Operating Expenditures	\$68,132,494
Capital Expenditures	1,035,587
Total District Use of Funds	\$69,168,081



District Debt and Capital Construction & Equipment

Total Outstanding Bonded Debt	\$63,559,995
Average Annual Percentage Interest Rate on Debt	4.73%
Amount Raised from Most Recent Bond	\$29,900,000
Amount Spent on New Buildings During Last 2 Years	\$614,097

Accreditation

Accreditation is Colorado's primary accountability system, incorporating achievement levels, academic growth, achievement gaps, post-secondary readiness, improvement planning, and compliance. The state accredits districts and districts accredit individual schools.

District Accreditation Status for the 2007-2008 school year:

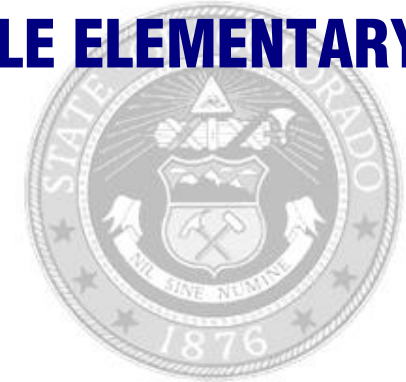
Voter Approved Funding Changes

Your community did /did not hold an election in November 2006

The following items have been approved by voters:

- TABOR Override
- Bond
- Mill Levy Increase

AVONDALE ELEMENTARY SCHOOL



PUEBLO COUNTY RURAL 70

ave.district70.org

School Accountability Report 2007-2008 School Year

School Performance Summary

Overall Academic Performance on State Assessments **Average**

Academic Growth of Students **Typical**

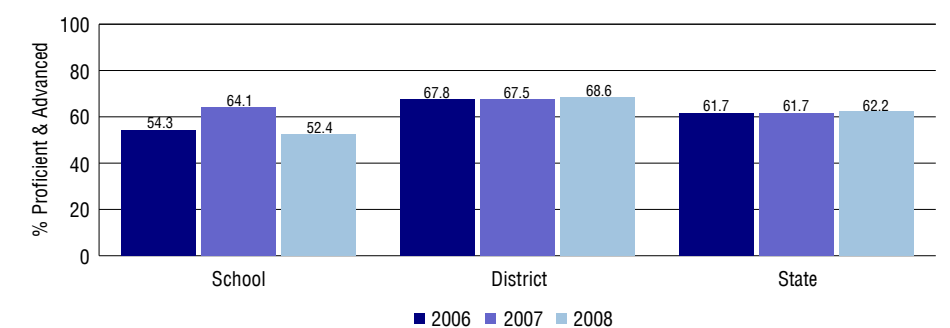
Overall Academic Performance on State Assessments

Each school in the State received a rating of "Excellent", "High", "Average", "Low", or "Unsatisfactory" for student academic performance based on 2007-2008 CSAP and COACT results. The rating is calculated using weighted percentages of each CSAP proficiency level for all content area and grade results for the school, as well as average COACT Reading, Writing, and Math Grade 11 results.

Academic Growth of Students

Each school in the State received a rating of "Low", "Typical", or "High" for student academic growth based on CSAP results. The calculation method is new for 2007-2008. The rating is calculated using student percentile scores matched over two years. More information about the Overall Academic Performance rating and Academic Growth of Students calculations can be found here: http://www.cde.state.co.us/cdeassess/SAR_Info.html.

Percent Proficient and Advanced for Elementary Grades for All Content Areas



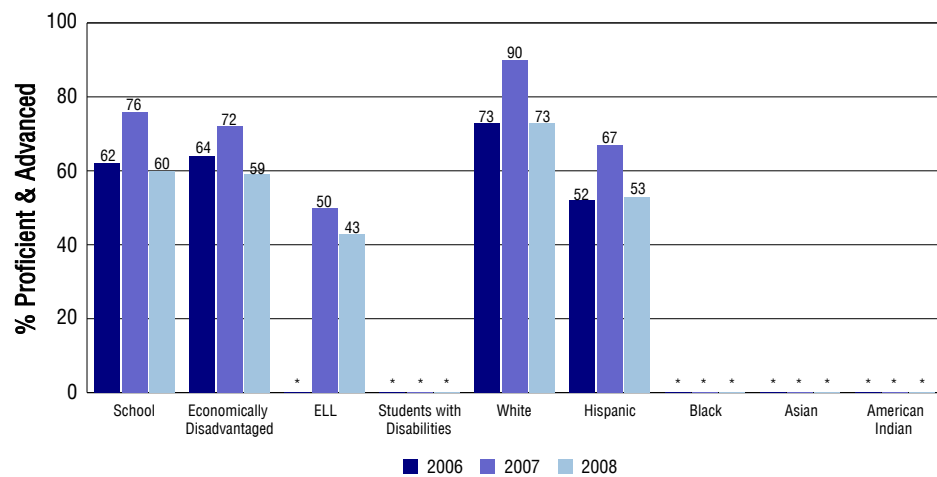
Student Test Scores Used For Calculating Overall Academic Performance

79.1%	Test Scores Counted
11.3%	Test Scores not used due to Language
9.6%	Test Scores not used due to New Student

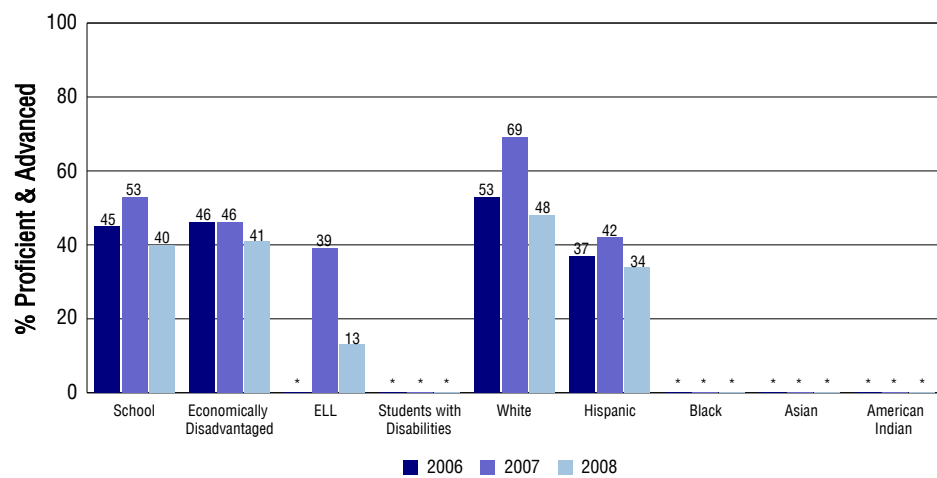
STUDENT PERFORMANCE

These graphs show the percent Proficient and Advanced trends over the past three years for Reading, Writing, and Math. Results are presented for the entire school for all reported grades as well as for different subgroups. Note: * indicates any group with less than 16 student results to be reported.

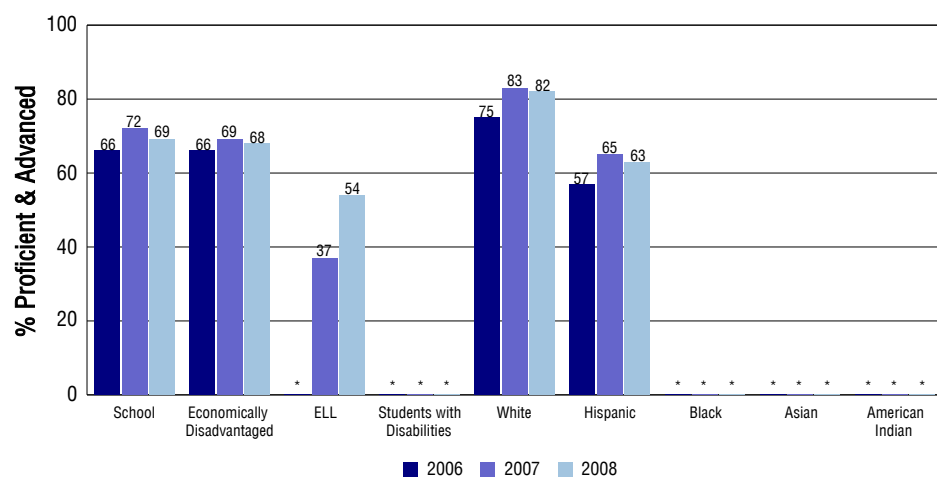
Reading



Writing



Math



SCHOOL INFORMATION

School Pride (as submitted by your district)

- An After School Academy has been in place for the past four years for students who need additional instruction.
- The Parent/Teacher/Student Organization raises funds to purchase materials needed for the school as well as funding needed for field trips throughout the year.
- Our Parent Community is an integral component of our school community. Family Nights are held at least four times yearly.
- Avondale Elementary maintains an "Open Door" policy which makes parents feel welcome.

School Goals (as submitted by your district)

To provide seamless instruction throughout grade levels by training all teachers in the same programs and curriculum so students will not need to "relearn" while advancing therefore narrowing learning gaps. Another area of focus is to identify students who are experiencing difficulties in learning and to provide the additional support needed through the RTI process. In addition, the Title 1, ELL, and Special Education teachers will continue to work as a team to provide instruction in the classrooms during literacy blocks focusing on the five components of reading

No Child Left Behind - Adequate Yearly Progress

Did your school make AYP in reading? Yes Math? Yes
 How many targets does your school have? 20 Met? 20

Based on this school's academic performance, your child may be eligible for one or more of the following; ask your school if your child qualifies for:

Extra academic instruction either before or after-school, or in the summer
 Mentoring

For additional information regarding Adequate Yearly Progress please visit
<http://www.cde.state.co.us/FedPrograms/ayp/index.asp>

How Avondale Elementary School Compares To Elementary Schools Within A 75-Mile Radius

School	Program Type	Academic Performance	Academic Growth
Vineland Elementary School		Average	Typical
North Mesa Elementary School		High	Typical
South Mesa Elementary School		High	Typical
Eva R Baca Elementary School(1)		Average	Typical
Spann Elementary School(1)		Average	Low
Bradford Elementary School(1)		Low	Low
Park View Elementary School(1)		Average	Typical
Benjamin Franklin Elementary School(1)		Average	Low
Belmont Elementary School(1)		High	Low
Fountain Elementary School(1)		Low	Low

1 Located in Pueblo City 60 School District.

ABOUT OUR STAFF

School Employment

Each year, your district reports to the Colorado Department of Education on the number of adults who work in your school, as well as the type of work they do. Last year, your school employed:

	Your School		District	
	Full Time	Part Time	Full Time	Part Time
Teachers	16	3	449	29
Paraprofessionals	4	7	158	32
Administrators	1	0	46	1
Other Professionals	0	6	36	1
School Support	2	1	176	114
School Counselors	1	0	20	1
School Librarians	0	0	3	0
Total Staff	41		1063	

Students per Teacher Ratio

	Student Enrollment	Students per Teacher
Grade 1	28	11.1
Grade 2	33	13.1
Grade 3	31	11.5
Grade 4	34	12.7
Grade 5	30	10.8

Professional Experience of Teachers

	Your School	District
Average years of teaching experience	8	10
Percent of teachers teaching in the subject in which they received their degree	N/A	N/A
Number of teachers with Masters or Doctoral degrees	9	250
Teachers with 3 years or more of teaching experience	14	408
Teachers with less than 3 years of teaching experience	5	70
Number of professional development days	8	7

Salaries

	Your School	District	State
Average Teacher Salary	\$40,482	\$44,268	\$47,494
Average Administrator Salary	\$77,591	\$76,509	\$80,444

Principal: Carmen Avalos

Number of years as Principal at this school: 4

Number of years as Principal at any school: 4