

# SAFETY AND SCHOOL ENVIRONMENT

## Non-CSAP Course Offerings

Your School Offers	does	does not
• art.....	<input checked="" type="checkbox"/>	<input type="checkbox"/>
• drama or theater.....	<input type="checkbox"/>	<input checked="" type="checkbox"/>
• music.....	<input checked="" type="checkbox"/>	<input type="checkbox"/>
• physical education.....	<input checked="" type="checkbox"/>	<input type="checkbox"/>
• opportunity for civic or community engagement.....	<input checked="" type="checkbox"/>	<input type="checkbox"/>
• internet safety program.....	<input checked="" type="checkbox"/>	<input type="checkbox"/>
• International Baccalaureate.....	<input type="checkbox"/>	<input checked="" type="checkbox"/>
• extracurricular activities.....	<input checked="" type="checkbox"/>	<input type="checkbox"/>
• athletics.....	<input type="checkbox"/>	<input checked="" type="checkbox"/>
• preschool program.....	<input checked="" type="checkbox"/>	<input type="checkbox"/>
• full-day kindergarten program.....	<input type="checkbox"/>	<input checked="" type="checkbox"/>
• before-and-after-school care program.....	<input type="checkbox"/>	<input checked="" type="checkbox"/>

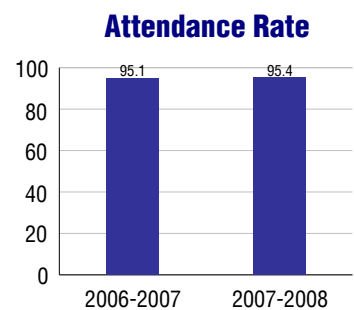
## Safety and Discipline

Safe schools are a top priority for parents, teachers, and communities. Your school safety and discipline record for the 2007-2008 school year is:

Type of Incident	Number of Incidents Reported	Percent of Total Incidents
Substance Abuse - Drugs		
Substance Abuse - Alcohol		
Substance Abuse - Tobacco		
Felony Assaults		
Fights		
Possession of Dangerous Weapons		
Other Violations Code of Conduct	13	100.0%

## Student Attendance and School Calendar

2007-2008	Your School
Enrollment	378
Average Daily Attendance	361
Student Dropouts	N/A



## Student Information Over Time

	2005-2006	2006-2007	2007-2008
Student Enrollment Stability	95.1%	88.4%	95.0%
Students Eligible for Free and Reduced Lunch	48.5 %	46.9 %	46.6 %

For more information and further details about this report, visit [www.state.co.us/schools](http://www.state.co.us/schools)  
 Colorado Department of Education, 201 East Colfax Ave. Denver, CO 80203  
**Pueblo West Elementary School**  
 2700/7210/E  
 386 East Hahns Peak Avenue . Pueblo West, CO 81007 . 719-547-2191  
 10/20/2008

# DISTRICT TAXPAYER'S REPORT

Sources of School District Revenue	2007	District Source of Funds 2007
Local Tax Contribution	\$21,512,637	
State Tax Contribution	35,758,380	
Federal Grants	5,218,453	
State Grants	2,285,284	
Private/Partnership Grants	231,185	
Other Discretionary Income	4,503,074	
<b>Total District Operating Revenue</b>	<b>\$69,509,013</b>	
Long Term Debt Proceeds	304,756	
<b>Total District Revenue</b>	<b>\$69,813,769</b>	
<b>Total District Operating Revenue Per Pupil =</b>	<b>\$8,322</b>	
<b>Total District Revenue Per Pupil (Including Long Term Debt) =</b>	<b>\$8,358</b>	
<b>District Per Pupil Operating Revenue =</b>	<b>\$5,630</b>	
<b>State Average Per Pupil Operating Revenue =</b>	<b>\$6,080</b>	
<b>District Use of Funds</b>	<b>2007</b>	
Instructional & Instructional Support	\$39,695,427	
Administration	4,881,141	
Building & Facilities Maintenance	7,129,244	
Operational Expenditures	6,195,082	
Debt Service	7,521,951	
Other Expenditures	2,709,649	
<b>Total District Operating Expenditures</b>	<b>\$68,132,494</b>	
Capital Expenditures	1,035,587	
<b>Total District Use of Funds</b>	<b>\$69,168,081</b>	

## District Debt and Capital Construction & Equipment

Total Outstanding Bonded Debt	\$63,559,995
Average Annual Percentage Interest Rate on Debt	4.73%
Amount Raised from Most Recent Bond	\$29,900,000
Amount Spent on New Buildings During Last 2 Years	\$614,097

## Accreditation

Accreditation is Colorado's primary accountability system, incorporating achievement levels, academic growth, achievement gaps, post-secondary readiness, improvement planning, and compliance. The state accredits districts and districts accredit individual schools.

District Accreditation Status for the 2007-2008 school year:

## Voter Approved Funding Changes

Your community did  /did not  hold an election in November 2006

The following items have been approved by voters:

- TABOR Override
- Bond
- Mill Levy Increase

# PUEBLO WEST ELEMENTARY SCHOOL



## PUEBLO COUNTY RURAL 70

[pwe.district70.org](http://pwe.district70.org)

## School Accountability Report 2007-2008 School Year

### School Performance Summary

**Overall Academic Performance on State Assessments** **Average**

**Academic Growth of Students** **Low**

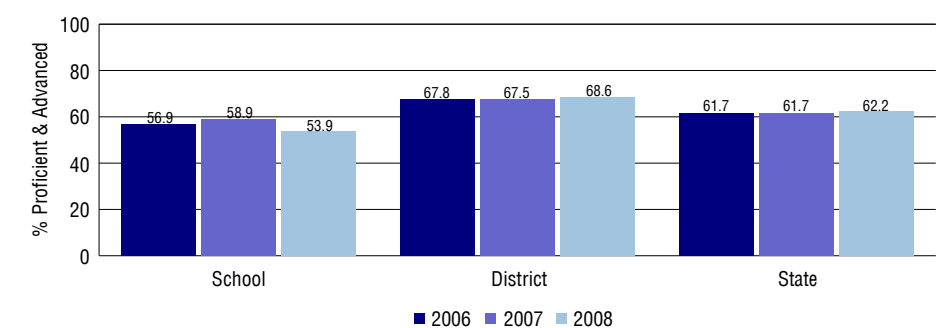
#### Overall Academic Performance on State Assessments

Each school in the State received a rating of "Excellent", "High", "Average", "Low", or "Unsatisfactory" for student academic performance based on 2007-2008 CSAP and COACT results. The rating is calculated using weighted percentages of each CSAP proficiency level for all content area and grade results for the school, as well as average COACT Reading, Writing, and Math Grade 11 results.

#### Academic Growth of Students

Each school in the State received a rating of "Low", "Typical", or "High" for student academic growth based on CSAP results. The calculation method is new for 2007-2008. The rating is calculated using student percentile scores matched over two years. More information about the Overall Academic Performance rating and Academic Growth of Students calculations can be found here: [http://www.cde.state.co.us/cdeassess/SAR\\_Info.html](http://www.cde.state.co.us/cdeassess/SAR_Info.html).

## Percent Proficient and Advanced for Elementary Grades for All Content Areas



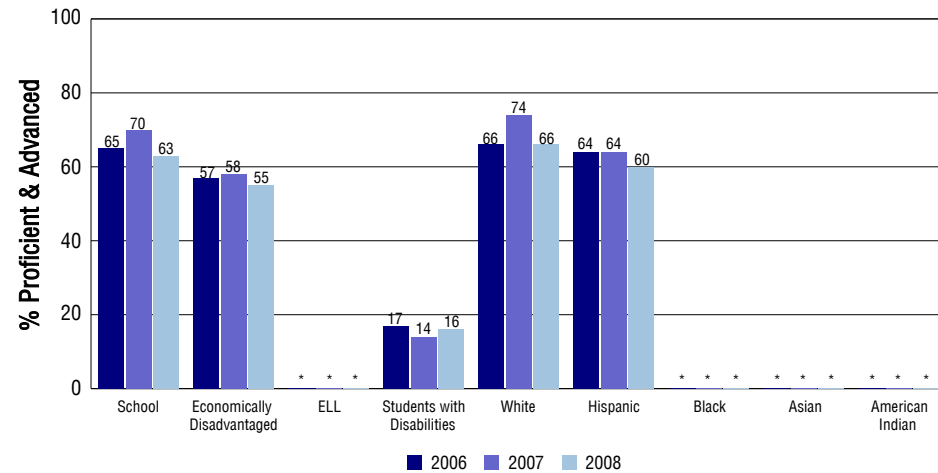
## Student Test Scores Used For Calculating Overall Academic Performance

86.5%	Test Scores Counted
3.9%	Test Scores not used due to Language
9.5%	Test Scores not used due to New Student

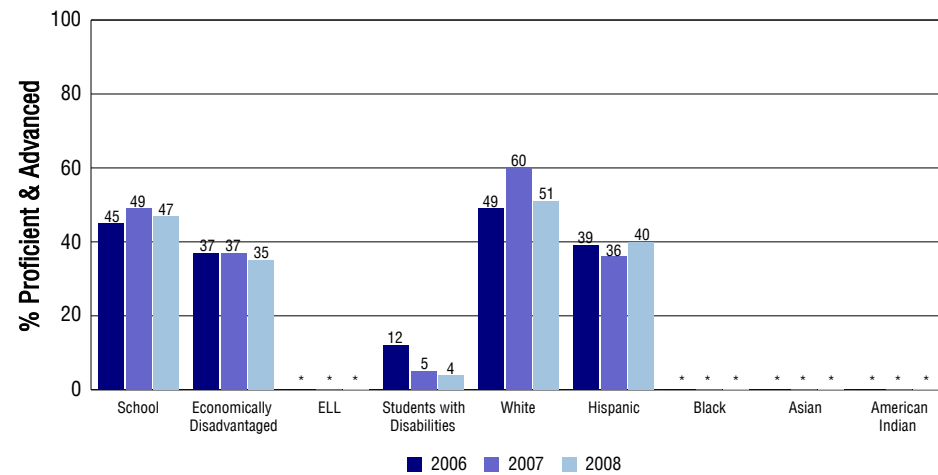
## STUDENT PERFORMANCE

These graphs show the percent Proficient and Advanced trends over the past three years for Reading, Writing, and Math. Results are presented for the entire school for all reported grades as well as for different subgroups. Note: \* indicates any group with less than 16 student results to be reported.

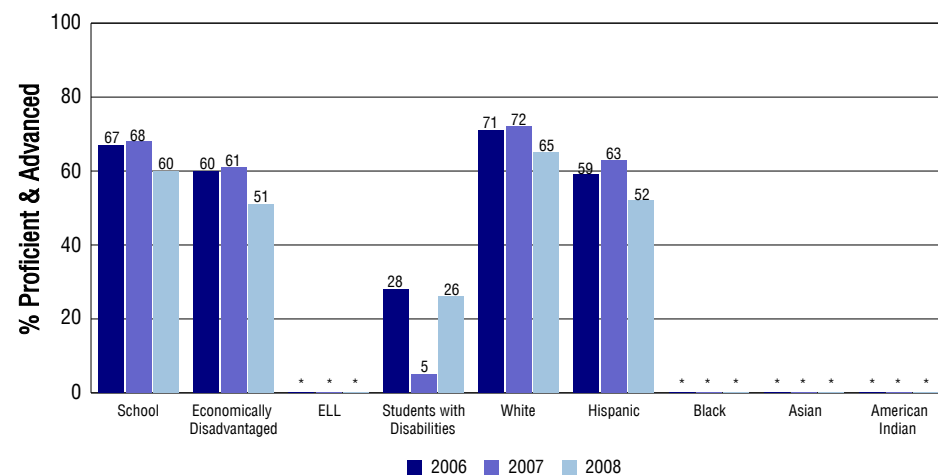
### Reading



### Writing



### Math



## SCHOOL INFORMATION

### School Pride (as submitted by your district)

- Our students participate in a variety of extracurricular opportunities including math competitions, choir, sports teams, student council and others.
- Daily after school homework/help sessions are available to students to provide individualized assistance with homework or other academic needs.
- Our parent community is an integral component of our school community.
- Our parent organization raised money to support technology, staff development, instructional resources, and educational initiatives to benefit our kids.

### School Goals (as submitted by your district)

As a data driven school we will continue to gather accurate, detailed and purposeful data to track our progress and identify areas needing improvement. We will continue to use CSAP results, Dibels, Reading Counts, SRI and Saxon Math Assessments as assessment tools. To provide students with an optimum learning experience our professional development focus was on learning how to do Curriculum Mapping. This is an on going process we use to navigate through strands of curriculum, highly effective activities and purposeful assessments in a predetermined order. Staff gathers data and reflects on the progress of students identifying the most effective avenue to instruction.

### No Child Left Behind - Adequate Yearly Progress

Did your school make AYP in reading?	Yes	Math?	No
How many targets does your school have?	26	Met?	25

Based on this school's academic performance, your child may be eligible for one or more of the following; ask your school if your child qualifies for:

Extra academic instruction either before or after-school, or in the summer  
Mentoring

For additional information regarding Adequate Yearly Progress please visit  
<http://www.cde.state.co.us/FedPrograms/ayp/index.asp>

### How Pueblo West Elementary School Compares To Elementary Schools Within A 75-Mile Radius

School	Program Type	Academic Performance	Academic Growth
Swallows Charter Academy	Charter	High	Typical
Desert Sage Elementary School		Average	High
Prairie Winds Elementary School		High	Typical
Sierra Vista Elementary School		High	Typical
Cedar Ridge Elementary School		High	High
Cesar Chavez Academy(1)	Charter	Average	Low
Goodnight Elementary School(1)		Average	Typical
Morton Elementary School(1)		Average	Typical
Irving Elementary School(1)		Low	Low
Somerlid Elementary School(1)		Average	Typical

1 Located in Pueblo City 60 School District.

## ABOUT OUR STAFF

### School Employment

Each year, your district reports to the Colorado Department of Education on the number of adults who work in your school, as well as the type of work they do. Last year, your school employed:

	Your School		District	
	Full Time	Part Time	Full Time	Part Time
Teachers	19	3	449	29
Paraprofessionals	7	4	158	32
Administrators	1	0	46	1
Other Professionals	0	4	36	1
School Support	2	1	176	114
School Counselors	1	0	20	1
School Librarians	0	0	3	0
<b>Total Staff</b>	42		1063	

### Students per Teacher Ratio

	Student Enrollment	Students per Teacher
Grade 1	72	18.6
Grade 2	54	17.2
Grade 3	59	21.1
Grade 4	58	16.4
Grade 5	50	14.7

### Professional Experience of Teachers

	Your School	District
Average years of teaching experience	10	10
Percent of teachers teaching in the subject in which they received their degree	N/A	N/A
Number of teachers with Masters or Doctoral degrees	11	250
Teachers with 3 years or more of teaching experience	17	408
Teachers with less than 3 years of teaching experience	5	70
Number of professional development days	8	7

### Salaries

	Your School	District	State
Average Teacher Salary	\$43,614	\$44,268	\$47,494
Average Administrator Salary	\$74,821	\$76,509	\$80,444

Principal: Cheryl Vincent

Number of years as Principal at this school: 2

Number of years as Principal at any school: 2