

SAFETY AND SCHOOL ENVIRONMENT

Non-CSAP Course Offerings

Your School Offers	does	does not
• art.....	<input checked="" type="checkbox"/>	<input type="checkbox"/>
• drama or theater.....	<input checked="" type="checkbox"/>	<input type="checkbox"/>
• music.....	<input checked="" type="checkbox"/>	<input type="checkbox"/>
• physical education.....	<input checked="" type="checkbox"/>	<input type="checkbox"/>
• opportunity for civic or community engagement.....	<input checked="" type="checkbox"/>	<input type="checkbox"/>
• internet safety program.....	<input checked="" type="checkbox"/>	<input type="checkbox"/>
• International Baccalaureate.....	<input type="checkbox"/>	<input checked="" type="checkbox"/>
• extracurricular activities.....	<input checked="" type="checkbox"/>	<input type="checkbox"/>
• athletics.....	<input checked="" type="checkbox"/>	<input type="checkbox"/>
• career and technical education.....	<input checked="" type="checkbox"/>	<input type="checkbox"/>
• advanced placement.....	<input checked="" type="checkbox"/>	<input type="checkbox"/>
• honors.....	<input checked="" type="checkbox"/>	<input type="checkbox"/>

Safety and Discipline

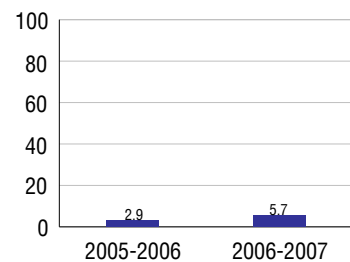
Safe schools are a top priority for parents, teachers, and communities. Your school safety and discipline record for the 2007-2008 school year is:

Type of Incident	Number of Incidents Reported	Percent of Total Incidents
Substance Abuse - Drugs	11	7.1%
Substance Abuse - Alcohol	9	5.8%
Substance Abuse - Tobacco	18	11.7%
Felony Assaults		
Fights	28	18.2%
Possession of Dangerous Weapons	6	3.9%
Other Violations Code of Conduct	82	53.2%

Student Attendance and School Calendar

2007-2008	Your School
Enrollment	1,297
Average Daily Attendance	1,227
Student Dropouts	5.7%

Dropout Rate



Student Information Over Time

	2005-2006	2006-2007	2007-2008
Student Enrollment Stability	89.2%	91.9%	92.7%
Students Eligible for Free and Reduced Lunch	27.3 %	24.7 %	21.8 %

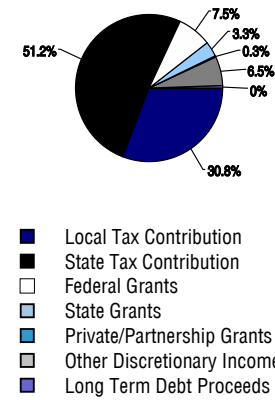
For more information and further details about this report, visit www.state.co.us/schools
 Colorado Department of Education, 201 East Colfax Ave. Denver, CO 80203
Pueblo West High School
 2700/7214/H
 661 Capistrano Drive . Pueblo West, CO 81007 . 719-547-8050
 10/20/2008

DISTRICT TAXPAYER'S REPORT

Sources of School District Revenue 2007

Local Tax Contribution	\$21,512,637
State Tax Contribution	35,758,380
Federal Grants	5,218,453
State Grants	2,285,284
Private/Partnership Grants	231,185
Other Discretionary Income	4,503,074
Total District Operating Revenue	\$69,509,013
Long Term Debt Proceeds	304,756
Total District Revenue	\$69,813,769
Total District Operating Revenue Per Pupil =	\$8,322
Total District Revenue Per Pupil (Including Long Term Debt) =	\$8,358
District Per Pupil Operating Revenue =	\$5,630
State Average Per Pupil Operating Revenue =	\$6,080

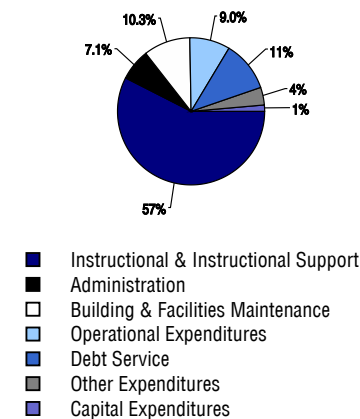
District Source of Funds 2007



District Use of Funds 2007

Instructional & Instructional Support	\$39,695,427
Administration	4,881,141
Building & Facilities Maintenance	7,129,244
Operational Expenditures	6,195,082
Debt Service	7,521,951
Other Expenditures	2,709,649
Total District Operating Expenditures	\$68,132,494
Capital Expenditures	1,035,587
Total District Use of Funds	\$69,168,081

District Use of Funds 2007



District Debt and Capital Construction & Equipment

Total Outstanding Bonded Debt	\$63,559,995
Average Annual Percentage Interest Rate on Debt	4.73%
Amount Raised from Most Recent Bond	\$29,900,000
Amount Spent on New Buildings During Last 2 Years	\$614,097

Accreditation

Accreditation is Colorado's primary accountability system, incorporating achievement levels, academic growth, achievement gaps, post-secondary readiness, improvement planning, and compliance. The state accredits districts and districts accredit individual schools.

District Accreditation Status for the 2007-2008 school year:

Voter Approved Funding Changes

Your community did /did not hold an election in November 2006

The following items have been approved by voters:

TABOR Override

Bond

Mill Levy Increase

PUEBLO WEST HIGH SCHOOL



PUEBLO COUNTY RURAL 70

pwh.district70.org

School Accountability Report 2007-2008 School Year

School Performance Summary

Overall Academic Performance on State Assessments

High

Academic Growth of Students

Typical

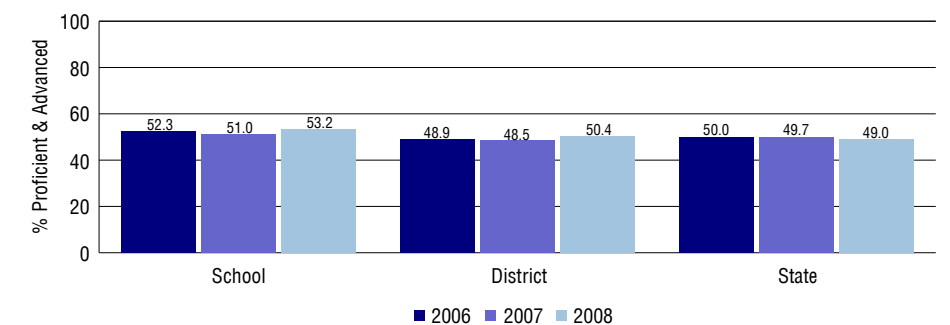
Overall Academic Performance on State Assessments

Each school in the State received a rating of "Excellent", "High", "Average", "Low", or "Unsatisfactory" for student academic performance based on 2007-2008 CSAP and COACT results. The rating is calculated using weighted percentages of each CSAP proficiency level for all content area and grade results for the school, as well as average COACT Reading, Writing, and Math Grade 11 results.

Academic Growth of Students

Each school in the State received a rating of "Low", "Typical", or "High" for student academic growth based on CSAP results. The calculation method is new for 2007-2008. The rating is calculated using student percentile scores matched over two years. More information about the Overall Academic Performance rating and Academic Growth of Students calculations can be found here: http://www.cde.state.co.us/cdeassess/SAR_Info.html.

Percent Proficient and Advanced for High Grades for All Content Areas



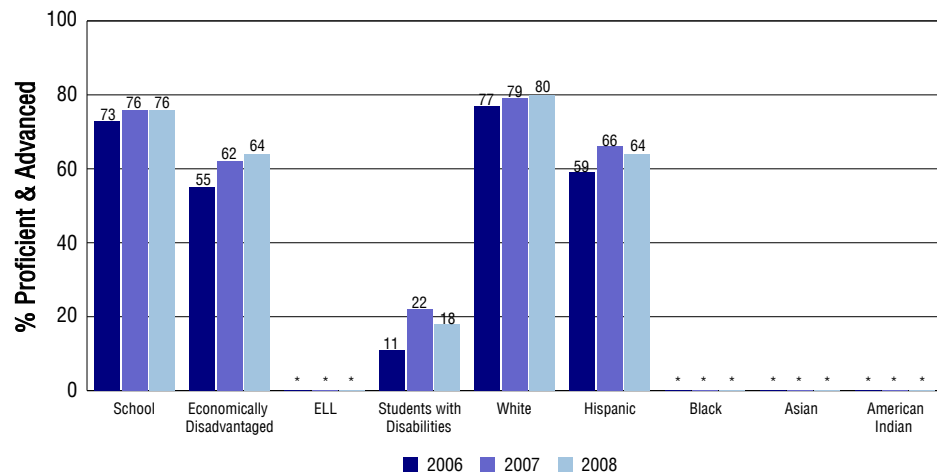
Student Test Scores Used For Calculating Overall Academic Performance

92.7%	Test Scores Counted
0.3%	Test Scores not used due to Language
7.0%	Test Scores not used due to New Student

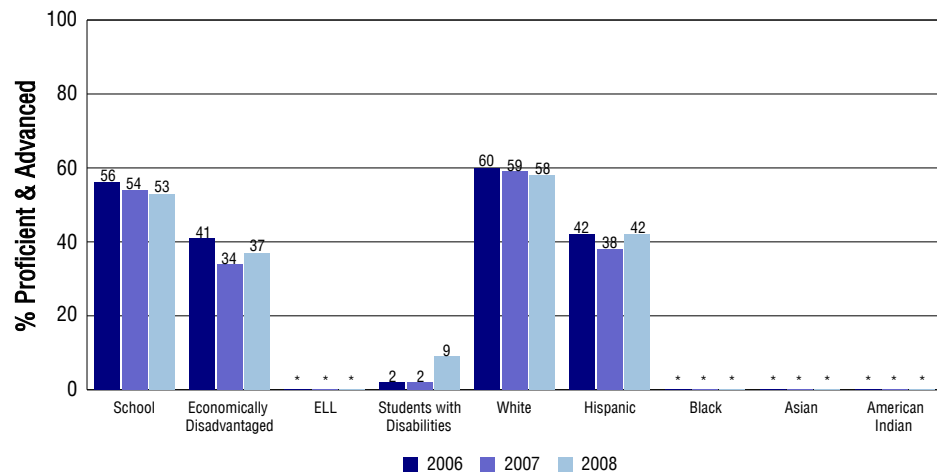
STUDENT PERFORMANCE

These graphs show the percent Proficient and Advanced trends over the past three years for Reading, Writing, and Math. Results are presented for the entire school for all reported grades as well as for different subgroups. Note: * indicates any group with less than 16 student results to be reported.

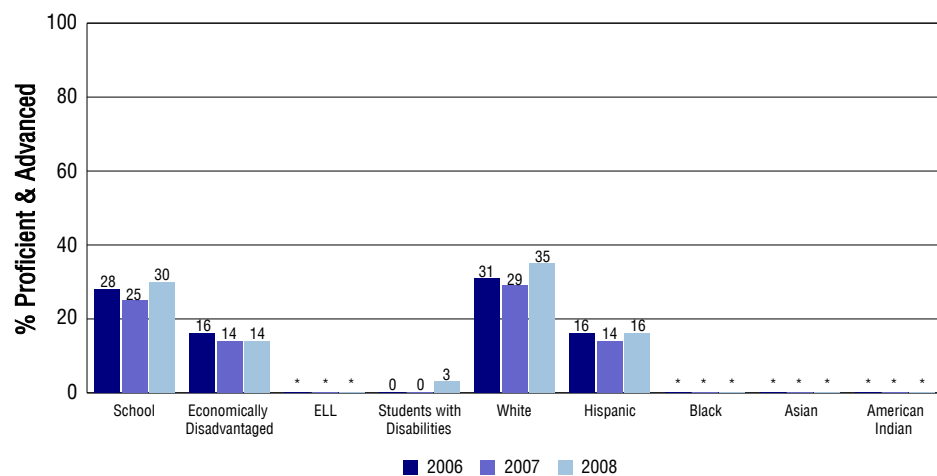
Reading



Writing



Math



SCHOOL INFORMATION

School Pride (as submitted by your district)

- Moving to the "High" state rating.
- Ongoing increase in the number of AP offerings.
- Amount and number of scholarship recipients continues to grow each year.
- Extracurricular programs continue to grow in size and success.

School Goals (as submitted by your district)

Our school academic goals are embedded in our building goals for this school year. Our school will focus on improving our areas of weaknesses in our CSAP scores. Tutoring programs in math and science are in place. We will continue to work from each classroom in improving our State mandated ACT scores. ACT prep sessions are in place. In order to align our curriculum, we will implement curriculum mapping school wide by the end of the school year.

No Child Left Behind - Adequate Yearly Progress

Did your school make AYP in reading?	Yes	Math?	Yes
Did your school make the graduation rate targets?	No		
How many targets does your school have?	23	Met?	21

Based on this school's academic performance, your child may be eligible for one or more of the following; ask your school if your child qualifies for:

Extra academic instruction either before or after-school, or in the summer
Mentoring

For additional information regarding Adequate Yearly Progress please visit
<http://www.cde.state.co.us/FedPrograms/ayp/index.asp>

How Pueblo West High School Compares To High Schools Within A 75-Mile Radius

School	Program Type	Academic Performance	Academic Growth
Dolores Huerta Preparatory High School(1)	Charter	Average	Typical
Centennial High School(1)		Average	Low
South High School(1)		Average	Low
Central High School(1)		Low	Low
East High School(1)		Low	Low
Pueblo Technical Academy		Excellent	Typical
Pueblo County High School		Average	Low
Florence High School(2)		Average	Typical
Garden Park High School(3)	Alternative	Low	No Rating
Fountain-Fort Carson High School(4)		Average	Low

1 Located in Pueblo City 60 School District.
2 Located in Florence RE-2 School District.
3 Located in Canon City RE-1 School District.
4 Located in Fountain 8 School District.

ABOUT OUR STAFF

School Employment

Each year, your district reports to the Colorado Department of Education on the number of adults who work in your school, as well as the type of work they do. Last year, your school employed:

	Your School		District	
	Full Time	Part Time	Full Time	Part Time
Teachers	55	4	449	29
Paraprofessionals	12	0	158	32
Administrators	4	0	46	1
Other Professionals	0	5	36	1
School Support	14	12	176	114
School Counselors	3	0	20	1
School Librarians	1	0	3	0
Total Staff	110		1063	

Students per Teacher Ratio

	Student Enrollment	Students per Teacher
Grade 9	347	22.9
Grade 10	305	20.6
Grade 11	349	26.3
Grade 12	296	22.3

Professional Experience of Teachers

	Your School	District
Average years of teaching experience	9	10
Percent of teachers teaching in the subject in which they received their degree	80%	79%
Number of teachers with Masters or Doctoral degrees	38	250
Teachers with 3 years or more of teaching experience	52	408
Teachers with less than 3 years of teaching experience	7	70
Number of professional development days	8	7

Salaries

	Your School	District	State
Average Teacher Salary	\$44,655	\$44,268	\$47,494
Average Administrator Salary	\$70,388	\$76,509	\$80,444

Principal: Martha Nogare

Number of years as Principal at this school: 4

Number of years as Principal at any school: 4