

SAFETY AND SCHOOL ENVIRONMENT

Non-CSAP Course Offerings

Your School Offers	does	does not
• art.....	<input type="checkbox"/>	<input checked="" type="checkbox"/>
• drama or theater.....	<input type="checkbox"/>	<input checked="" type="checkbox"/>
• music.....	<input checked="" type="checkbox"/>	<input type="checkbox"/>
• physical education.....	<input checked="" type="checkbox"/>	<input type="checkbox"/>
• opportunity for civic or community engagement.....	<input type="checkbox"/>	<input checked="" type="checkbox"/>
• internet safety program.....	<input type="checkbox"/>	<input checked="" type="checkbox"/>
• International Baccalaureate.....	<input type="checkbox"/>	<input checked="" type="checkbox"/>
• extracurricular activities.....	<input checked="" type="checkbox"/>	<input type="checkbox"/>
• athletics.....	<input type="checkbox"/>	<input checked="" type="checkbox"/>
• preschool program.....	<input checked="" type="checkbox"/>	<input type="checkbox"/>
• full-day kindergarten program.....	<input type="checkbox"/>	<input checked="" type="checkbox"/>
• before-and-after-school care program.....	<input type="checkbox"/>	<input checked="" type="checkbox"/>

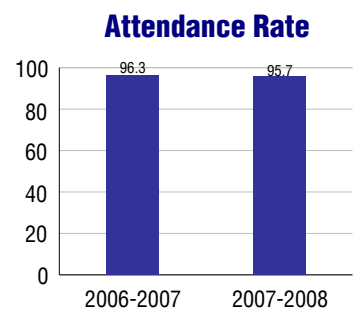
Safety and Discipline

Safe schools are a top priority for parents, teachers, and communities. Your school safety and discipline record for the 2007-2008 school year is:

Type of Incident	Number of Incidents Reported	Percent of Total Incidents
Substance Abuse - Drugs		
Substance Abuse - Alcohol		
Substance Abuse - Tobacco		
Felony Assaults		
Fights		
Possession of Dangerous Weapons		
Other Violations Code of Conduct	12	100.0%

Student Attendance and School Calendar

2007-2008	Your School
Enrollment	284
Average Daily Attendance	272
Student Dropouts	N/A



Student Information Over Time

	2005-2006	2006-2007	2007-2008
Student Enrollment Stability	94.3%	98.7%	96.8%
Students Eligible for Free and Reduced Lunch	52.4 %	41.8 %	45.4 %

For more information and further details about this report, visit www.state.co.us/schools
 Colorado Department of Education, 201 East Colfax Ave. Denver, CO 80203
South Mesa Elementary School
 2700/8110/E
 23701 East Preston Road . Pueblo, CO 81006 . 719-543-6444
 10/20/2008

DISTRICT TAXPAYER'S REPORT

Sources of School District Revenue	2007	District Source of Funds 2007
Local Tax Contribution	\$21,512,637	
State Tax Contribution	35,758,380	
Federal Grants	5,218,453	
State Grants	2,285,284	
Private/Partnership Grants	231,185	
Other Discretionary Income	4,503,074	
Total District Operating Revenue	\$69,509,013	
Long Term Debt Proceeds	304,756	
Total District Revenue	\$69,813,769	
Total District Operating Revenue Per Pupil =	\$8,322	
Total District Revenue Per Pupil (Including Long Term Debt) =	\$8,358	
District Per Pupil Operating Revenue =	\$5,630	
State Average Per Pupil Operating Revenue =	\$6,080	
District Use of Funds	2007	
Instructional & Instructional Support	\$39,695,427	
Administration	4,881,141	
Building & Facilities Maintenance	7,129,244	
Operational Expenditures	6,195,082	
Debt Service	7,521,951	
Other Expenditures	2,709,649	
Total District Operating Expenditures	\$68,132,494	
Capital Expenditures	1,035,587	
Total District Use of Funds	\$69,168,081	

District Debt and Capital Construction & Equipment

Total Outstanding Bonded Debt	\$63,559,995
Average Annual Percentage Interest Rate on Debt	4.73%
Amount Raised from Most Recent Bond	\$29,900,000
Amount Spent on New Buildings During Last 2 Years	\$614,097

Accreditation

Accreditation is Colorado's primary accountability system, incorporating achievement levels, academic growth, achievement gaps, post-secondary readiness, improvement planning, and compliance. The state accredits districts and districts accredit individual schools.

District Accreditation Status for the 2007-2008 school year:

Voter Approved Funding Changes

Your community did /did not hold an election in November 2006

The following items have been approved by voters:

- TABOR Override
- Bond
- Mill Levy Increase

SOUTH MESA ELEMENTARY SCHOOL



PUEBLO COUNTY RURAL 70

sme.district70.org

School Accountability Report 2007-2008 School Year

School Performance Summary

Overall Academic Performance on State Assessments **High**

Academic Growth of Students **Typical**

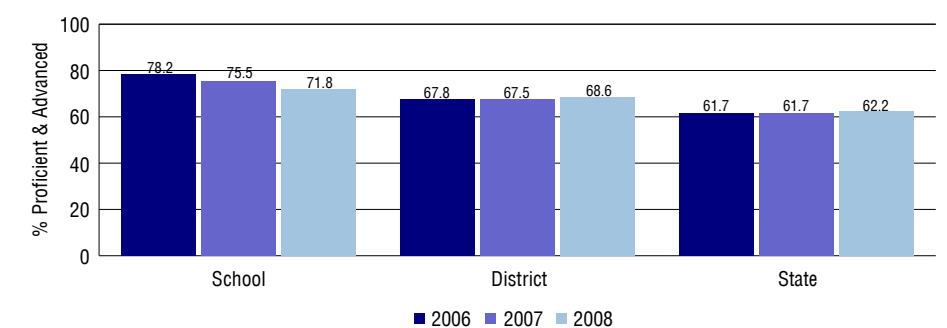
Overall Academic Performance on State Assessments

Each school in the State received a rating of "Excellent", "High", "Average", "Low", or "Unsatisfactory" for student academic performance based on 2007-2008 CSAP and COACT results. The rating is calculated using weighted percentages of each CSAP proficiency level for all content area and grade results for the school, as well as average COACT Reading, Writing, and Math Grade 11 results.

Academic Growth of Students

Each school in the State received a rating of "Low", "Typical", or "High" for student academic growth based on CSAP results. The calculation method is new for 2007-2008. The rating is calculated using student percentile scores matched over two years. More information about the Overall Academic Performance rating and Academic Growth of Students calculations can be found here: http://www.cde.state.co.us/cdeassess/SAR_Info.html.

Percent Proficient and Advanced for Elementary Grades for All Content Areas



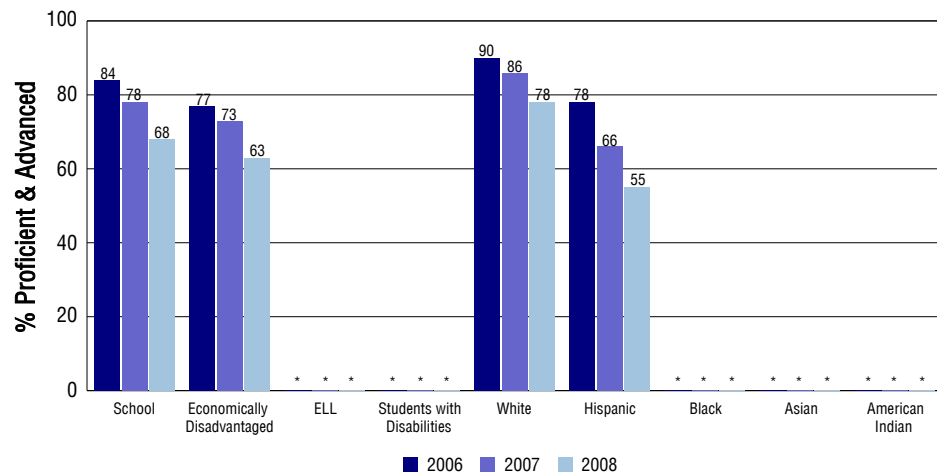
Student Test Scores Used For Calculating Overall Academic Performance

94.9%	Test Scores Counted
1.4%	Test Scores not used due to Language
3.7%	Test Scores not used due to New Student

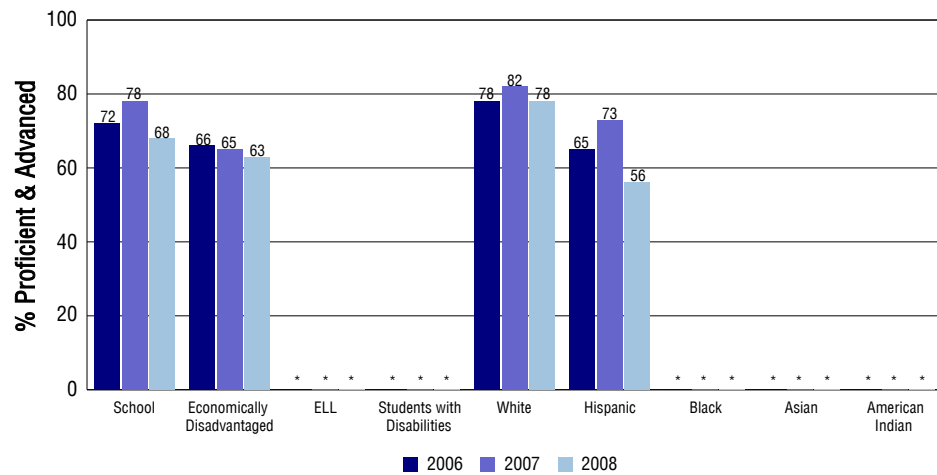
STUDENT PERFORMANCE

These graphs show the percent Proficient and Advanced trends over the past three years for Reading, Writing, and Math. Results are presented for the entire school for all reported grades as well as for different subgroups. Note: * indicates any group with less than 16 student results to be reported.

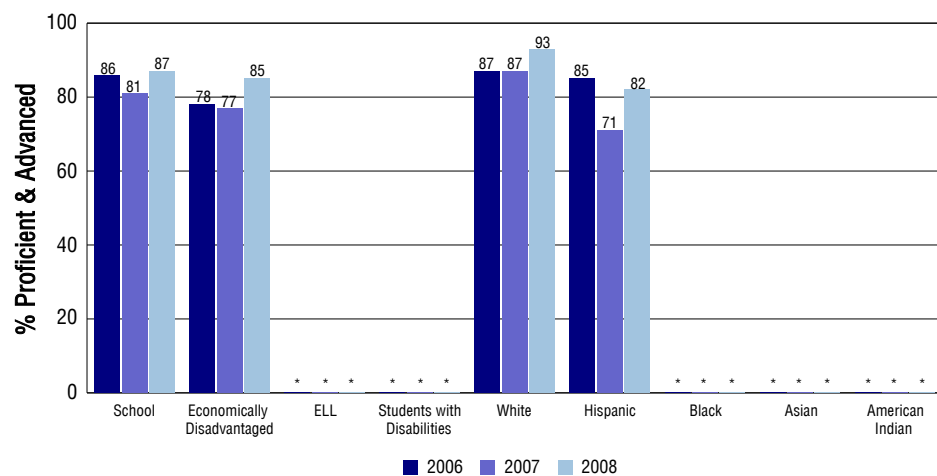
Reading



Writing



Math



SCHOOL INFORMATION

School Pride (as submitted by your district)

- Recognized by CDE and CASB for Excellence in Education
- Innovative Flooding program, a team approach to literacy
- Extra curricular activities include guitar ensemble, brain bowl, spelling bee, student council, champion cup stacking teams and more
- Outstanding PTO organization

School Goals (as submitted by your district)

Use data on CSAP, MAP, DRA, QRI, Saxon Math Assessments, AR, and DIBELS to improve instruction and continue to be a data driven school. Every student will make at least one year's growth in Reading, measured by these assessments. In addition to Reading, we will continue to make gains in Math and Science by a minimum of 5% proficient or advanced on the CSAP test. We will also improve our technological capabilities to ensure that every student has the opportunity to grow in the area of technology and media use. Finally, we will provide interventions for students that are not progressing toward meeting academic standards or those students who exceed academic standards.

No Child Left Behind - Adequate Yearly Progress

Did your school make AYP in reading? Yes Math? Yes
 How many targets does your school have? 24 Met? 24

Based on this school's academic performance, your child may be eligible for one or more of the following; ask your school if your child qualifies for:

Extra academic instruction either before or after-school, or in the summer
 Mentoring

For additional information regarding Adequate Yearly Progress please visit
<http://www.cde.state.co.us/FedPrograms/ayp/index.asp>

How South Mesa Elementary School Compares To Elementary Schools Within A 75-Mile Radius

School	Program Type	Academic Performance	Academic Growth
North Mesa Elementary School		High	Typical
Bradford Elementary School(1)		Low	Low
Eva R Baca Elementary School(1)		Average	Typical
Park View Elementary School(1)		Average	Typical
Minnequa Elementary School(1)		Average	Low
Spann Elementary School(1)		Average	Low
Bessemer Elementary School(1)		Average	Low
Fountain Elementary School(1)		Low	Low
Columbian Elementary School(1)		Average	Low
Benjamin Franklin Elementary School(1)		Average	Low

1 Located in Pueblo City 60 School District.

ABOUT OUR STAFF

School Employment

Each year, your district reports to the Colorado Department of Education on the number of adults who work in your school, as well as the type of work they do. Last year, your school employed:

	Your School		District	
	Full Time	Part Time	Full Time	Part Time
Teachers	16	2	449	29
Paraprofessionals	4	4	158	32
Administrators	1	0	46	1
Other Professionals	0	3	36	1
School Support	2	1	176	114
School Counselors	1	0	20	1
School Librarians	0	0	3	0
Total Staff	34		1063	

Students per Teacher Ratio

	Student Enrollment	Students per Teacher
Grade 1	44	12.4
Grade 2	50	16.4
Grade 3	43	15.8
Grade 4	42	19
Grade 5	47	17.3

Professional Experience of Teachers

	Your School	District
Average years of teaching experience	8	10
Percent of teachers teaching in the subject in which they received their degree	N/A	N/A
Number of teachers with Masters or Doctoral degrees	9	250
Teachers with 3 years or more of teaching experience	15	408
Teachers with less than 3 years of teaching experience	3	70
Number of professional development days	8	7

Salaries

	Your School	District	State
Average Teacher Salary	\$42,556	\$44,268	\$47,494
Average Administrator Salary	\$77,591	\$76,509	\$80,444

Principal: Manuel Calderon

Number of years as Principal at this school: 1 (New Hire 2007/2008)

Number of years as Principal at any school: 1