

SAFETY AND SCHOOL ENVIRONMENT

Non-CSAP Course Offerings

Your School Offers	does	does not
• art.....	<input checked="" type="checkbox"/>	<input type="checkbox"/>
• drama or theater.....	<input type="checkbox"/>	<input checked="" type="checkbox"/>
• music.....	<input checked="" type="checkbox"/>	<input type="checkbox"/>
• physical education.....	<input checked="" type="checkbox"/>	<input type="checkbox"/>
• opportunity for civic or community engagement.....	<input checked="" type="checkbox"/>	<input type="checkbox"/>
• internet safety program.....	<input checked="" type="checkbox"/>	<input type="checkbox"/>
• International Baccalaureate.....	<input type="checkbox"/>	<input checked="" type="checkbox"/>
• extracurricular activities.....	<input checked="" type="checkbox"/>	<input type="checkbox"/>
• athletics.....	<input checked="" type="checkbox"/>	<input type="checkbox"/>
• career and technical education.....	<input checked="" type="checkbox"/>	<input type="checkbox"/>
• honors.....	<input type="checkbox"/>	<input checked="" type="checkbox"/>

Safety and Discipline

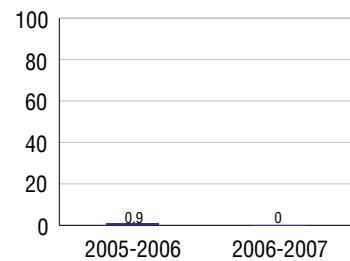
Safe schools are a top priority for parents, teachers, and communities. Your school safety and discipline record for the 2007-2008 school year is:

Type of Incident	Number of Incidents Reported	Percent of Total Incidents
Substance Abuse - Drugs	1	6.2%
Substance Abuse - Alcohol		
Substance Abuse - Tobacco		
Felony Assaults		
Fights		
Possession of Dangerous Weapons		
Other Violations Code of Conduct	15	93.8%

Student Attendance and School Calendar

2007-2008	Your School
Enrollment	225
Average Daily Attendance	214
Student Dropouts	0.0%

Dropout Rate



Student Information Over Time

	2005-2006	2006-2007	2007-2008
Student Enrollment Stability	91.4%	92.4%	92.9%
Students Eligible for Free and Reduced Lunch	67.5 %	65.5 %	61.3 %

For more information and further details about this report, visit www.state.co.us/schools
Colorado Department of Education, 201 East Colfax Ave. Denver, CO 80203

Vineland Middle School
2700/9134/M
1132 Lane 36 . Pueblo, CO 81006 . 719-948-3336
10/20/2008

DISTRICT TAXPAYER'S REPORT

Sources of School District Revenue	2007	District Source of Funds 2007
Local Tax Contribution	\$21,512,637	
State Tax Contribution	35,758,380	
Federal Grants	5,218,453	
State Grants	2,285,284	
Private/Partnership Grants	231,185	
Other Discretionary Income	4,503,074	
Total District Operating Revenue	\$69,509,013	
Long Term Debt Proceeds	304,756	
Total District Revenue	\$69,813,769	
Total District Operating Revenue Per Pupil =	\$8,322	
Total District Revenue Per Pupil (Including Long Term Debt) =	\$8,358	District Debt and Capital Construction & Equipment
District Per Pupil Operating Revenue =	\$5,630	
State Average Per Pupil Operating Revenue =	\$6,080	
District Use of Funds	2007	
Instructional & Instructional Support	\$39,695,427	Total Outstanding Bonded Debt \$63,559,995 Average Annual Percentage Interest Rate on Debt 4.73% Amount Raised from Most Recent Bond \$29,900,000 Amount Spent on New Buildings During Last 2 Years \$614,097
Administration	4,881,141	
Building & Facilities Maintenance	7,129,244	
Operational Expenditures	6,195,082	
Debt Service	7,521,951	
Other Expenditures	2,709,649	
Total District Operating Expenditures	\$68,132,494	
Capital Expenditures	1,035,587	
Total District Use of Funds	\$69,168,081	

District Debt and Capital Construction & Equipment

Total Outstanding Bonded Debt	\$63,559,995
Average Annual Percentage Interest Rate on Debt	4.73%
Amount Raised from Most Recent Bond	\$29,900,000
Amount Spent on New Buildings During Last 2 Years	\$614,097

Accreditation

Accreditation is Colorado's primary accountability system, incorporating achievement levels, academic growth, achievement gaps, post-secondary readiness, improvement planning, and compliance. The state accredits districts and districts accredit individual schools.

District Accreditation Status for the 2007-2008 school year:

Voter Approved Funding Changes

Your community did /did not hold an election in November 2006

The following items have been approved by voters:

- TABOR Override
- Bond
- Mill Levy Increase

VINELAND MIDDLE SCHOOL



PUEBLO COUNTY RURAL 70

vlm.district70.org

School Accountability Report 2007-2008 School Year

School Performance Summary

Overall Academic Performance on State Assessments High

Academic Growth of Students High

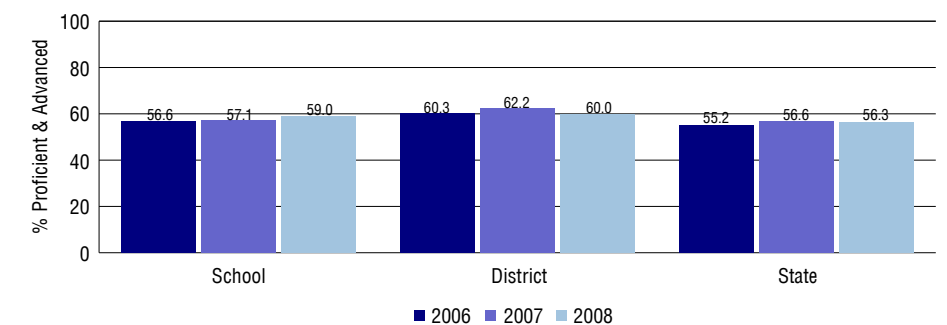
Overall Academic Performance on State Assessments

Each school in the State received a rating of "Excellent", "High", "Average", "Low", or "Unsatisfactory" for student academic performance based on 2007-2008 CSAP and COACT results. The rating is calculated using weighted percentages of each CSAP proficiency level for all content area and grade results for the school, as well as average COACT Reading, Writing, and Math Grade 11 results.

Academic Growth of Students

Each school in the State received a rating of "Low", "Typical", or "High" for student academic growth based on CSAP results. The calculation method is new for 2007-2008. The rating is calculated using student percentile scores matched over two years. More information about the Overall Academic Performance rating and Academic Growth of Students calculations can be found here: http://www.cde.state.co.us/cdeassess/SAR_Info.html.

Percent Proficient and Advanced for Middle Grades for All Content Areas



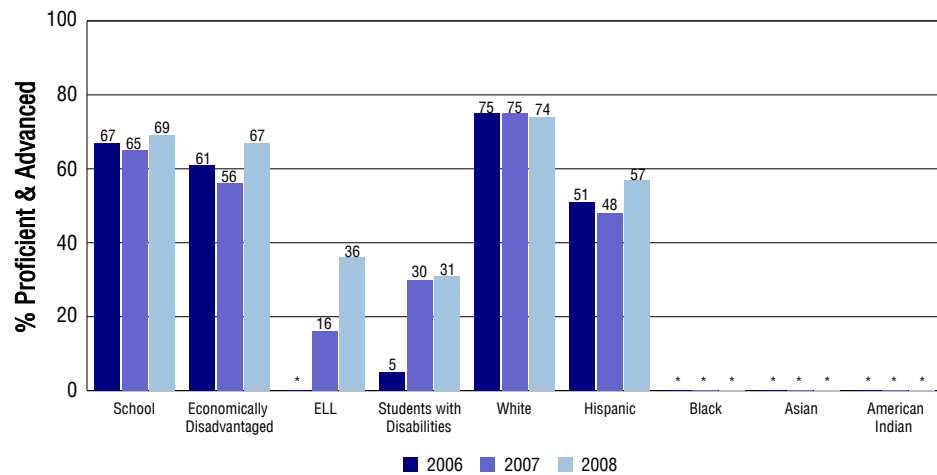
Student Test Scores Used For Calculating Overall Academic Performance

91.2%	Test Scores Counted
2.8%	Test Scores not used due to Language
6.1%	Test Scores not used due to New Student

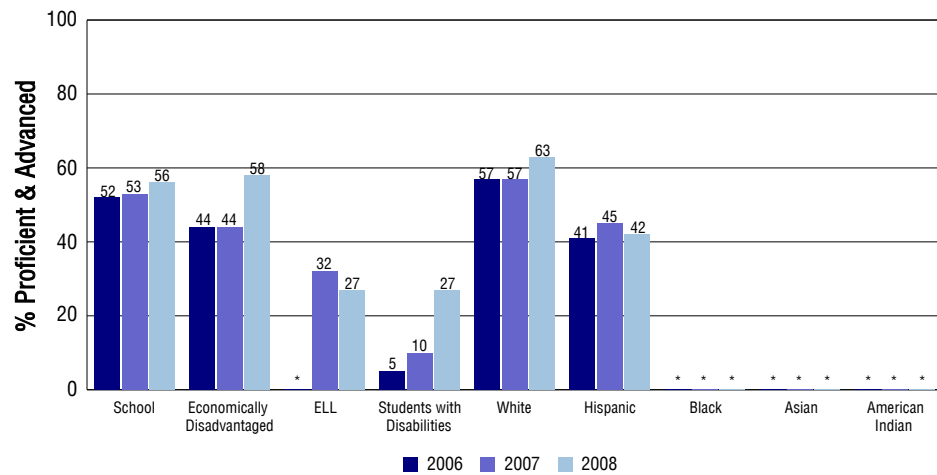
STUDENT PERFORMANCE

These graphs show the percent Proficient and Advanced trends over the past three years for Reading, Writing, and Math. Results are presented for the entire school for all reported grades as well as for different subgroups. Note: * indicates any group with less than 16 student results to be reported.

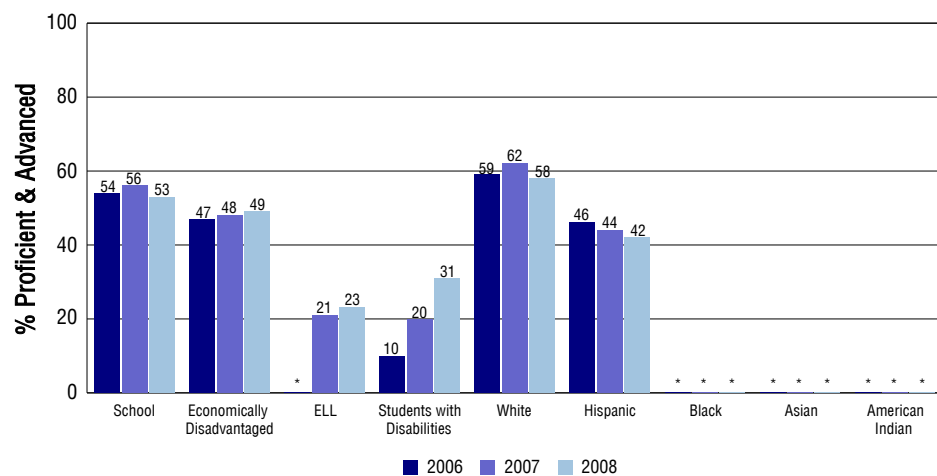
Reading



Writing



Math



SCHOOL INFORMATION

School Pride (as submitted by your district)

- Our school motto is: A PIRATE'S QUEST IS TO BE THE BEST
- Through corporate sponsorship, all 226 students at Vineland Middle School received a free book of their choice from the Scholastic Book Fair.
- Our students participate in a variety of fundraisers to support our school and community.
- Daily, our teachers integrate technology into our standards based curriculum, to help students develop lifelong technology learning skills.

School Goals (as submitted by your district)

CDE sets achievement performance rates for AYP. This year's reading rate was 80.25% proficient. Vineland Middle School exceeded this rate and scored 92.5%. The rate set by CDE for math this year was 69.63% proficient, and Vineland Middle School again exceeded the rate and scored 91.71%. Our academic goal is to have 100% proficient by 2014. Our school focused our staff development on two research based instructional strategies. (1)Curriculum Mapping; and (2)Step up to Writing. Through purposeful instruction using these strategies, we aimed to impact student achievement. We will continue to use these two strategies and improve on them.

No Child Left Behind - Adequate Yearly Progress

Did your school make AYP in reading?	Yes	Math?	Yes
How many targets does your school have?	24	Met?	24

Based on this school's academic performance, your child may be eligible for one or more of the following; ask your school if your child qualifies for:

Extra academic instruction either before or after-school, or in the summer
Mentoring

For additional information regarding Adequate Yearly Progress please visit
<http://www.cde.state.co.us/FedPrograms/ayp/index.asp>

How Vineland Middle School Compares To Middle Schools Within A 75-Mile Radius

School	Program Type	Academic Performance	Academic Growth
Pleasant View Middle School		High	Low
James H Risley Middle School(1)		Low	Low
W H Heaton Middle School(1)		Average	Low
The Connect Charter School	Charter	Excellent	Typical
Bessemer Elementary School(1)		Low	Low
Freed Middle School(1)		Low	Low
Corwin Middle School(1)		Low	Low
Pueblo Charter School For The Arts & Sciences(1)	Charter	High	Typical
Lemuel Pitts Middle School(1)		Average	Low
Cesar Chavez Academy(1)	Charter	High	Typical

1 Located in Pueblo City 60 School District.

ABOUT OUR STAFF

School Employment

Each year, your district reports to the Colorado Department of Education on the number of adults who work in your school, as well as the type of work they do. Last year, your school employed:

	Your School		District	
	Full Time	Part Time	Full Time	Part Time
Teachers	13	6	449	29
Paraprofessionals	5	0	158	32
Administrators	1	0	46	1
Other Professionals	0	3	36	1
School Support	6	6	176	114
School Counselors	1	0	20	1
School Librarians	0	0	3	0
Total Staff	41		1063	

Students per Teacher Ratio

	Student Enrollment	Students per Teacher
Grade 6	68	12.4
Grade 7	77	17.9
Grade 8	80	15.1

Professional Experience of Teachers

	Your School	District
Average years of teaching experience	10	10
Percent of teachers teaching in the subject in which they received their degree	71%	79%
Number of teachers with Masters or Doctoral degrees	9	250
Teachers with 3 years or more of teaching experience	16	408
Teachers with less than 3 years of teaching experience	3	70
Number of professional development days	8	7

Salaries

	Your School	District	State
Average Teacher Salary	\$42,161	\$44,268	\$47,494
Average Administrator Salary	\$92,480	\$76,509	\$80,444

Principal: Laurie Stratman

Number of years as Principal at this school: 8

Number of years as Principal at any school: 8